

## SILPHON®FIBER ULH / Dens 10

**SILPHON®FIBER ULH** is a thermally insulation material and a sound absorber made of 100% polyester fiber thermobonded (Polyethylene terephthalate – Co-Polymer Polyethylene terephthalate) specifically designed for use in the railway sector.

The characteristic of thermobonding is the complete recyclability of the product and of its clippings; for this reason it can be considered to all effects 100% recyclable.

Not fraying and does not disperse into the environment powders, particles or fibrils potentially harmful to man: the average diameter of its fibers is 19,4 micrometers.

**SILPHON®FIBER ULH** is designed for the 'insulation of high speed railway rolling stock.

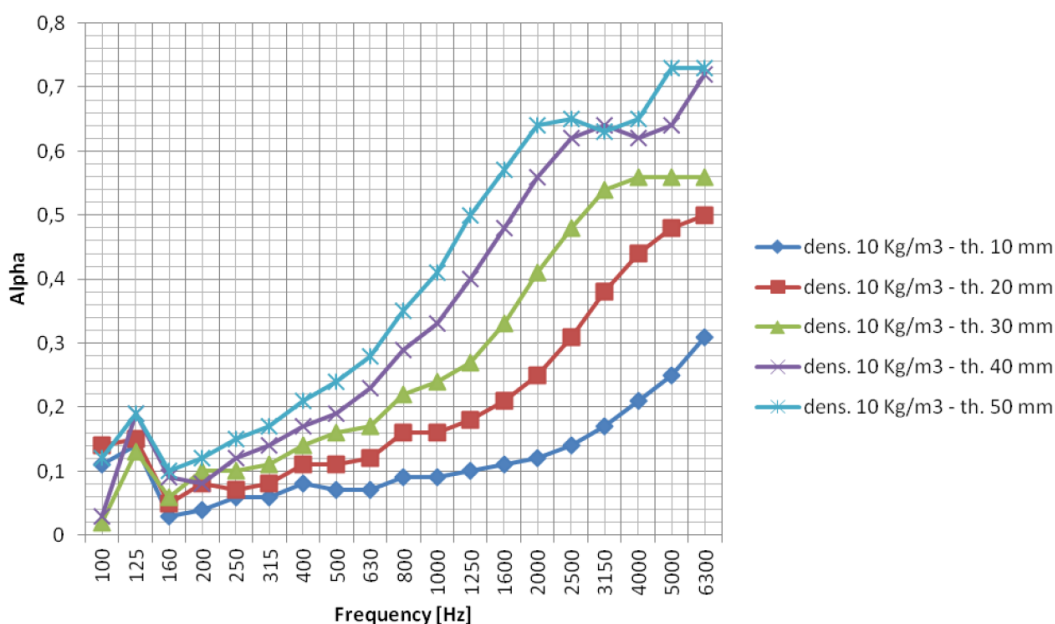
The expected thermal conductivity of **SILPHON®FIBER ULH** at the density of 10 Kg/m<sup>3</sup> is " $\lambda$ " <= 0,0469 W/(mK).

The expected sound absorption coefficient of **SILPHON®FIBER ULH** measured with Kundt's tube in density 10 kg/m<sup>3</sup> and in reverberant room of **SILPHON®FIBER ULH** density 20 kg/m<sup>3</sup> and thickness 50 mm are represented on graphs below.

**SILPHON®FIBER ULH** on density 10 kg/m<sup>3</sup> is also expected to be HL3 for thicknesses from 10 mm up to 100 mm according to EN45545-2.

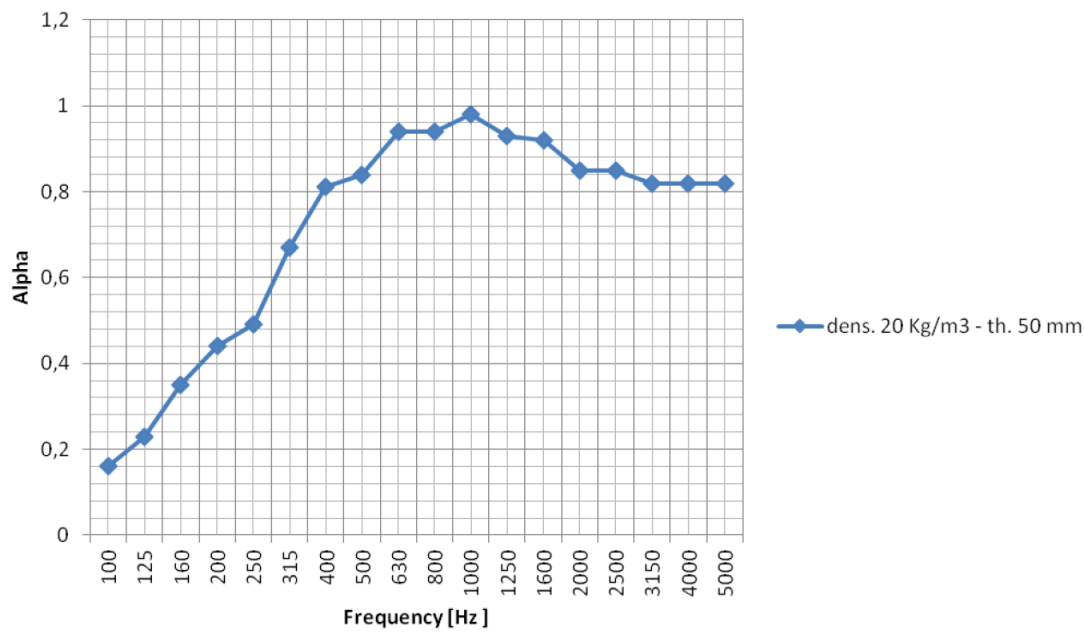
Density	Material in rolls	Material in sheets
10 Kg/m <sup>3</sup>	Thickness from 15 to 40 mm +/- 5 mm Width of Rolls: 1000 / 1200 mm +/- 5 mm	Thickness: from 25 to 100 mm +/- 5 mm Standard panels dimensions: 2800 x 1200 mm

### Expected acoustic absorption Kundt's tube SILPHON®FIBER ULH



Die Angaben erfolgen nach bestem Wissen und technischen Kenntnissen. Vorbehalten bleiben Änderungen.

## Expected acoustic absorption SILPHON®FIBER ULH



Die Angaben erfolgen nach bestem Wissen und technischen Kenntnissen. Vorbehalten bleiben Änderungen.